

CHEMETAL COMMERCIAL

THAT
M.ETAL!
COMPANY

CHEMETAL COMMERCIAL

Chemetal sheet metals are ideal for commercial fit-outs. They are light-weight, versatile, easy to instal and give a consistent look over a large area.

And the range of finishes ensures that you'll always find the look you want.

Be inspired by our images to use Chemetal in offices, retail, restaurants, bars, hotels, aged care facilities and public spaces.

In the following ways:

- Panelling on walls, counters, bars and ceilings
- Reception desks, display counters and servery counters
- Wall displays, doors and door surrounds
- Staircase balustrades
- Elevator doors, interiors and surrounds
- Kickboards and trims on doors, bars, counters and desks

... And all the places that you'll think of that we haven't yet!

#904 BRUSHED BRASS ALUMINIUM | SCREEN PANELS AND LETTERBOX SURROUNDS



WHAT IS CHEMETAL?

- That Metal Company is the exclusive distributor for Chemetal metal finishes in Australia and New Zealand.
- A process of deep brushing, darkening and adding patinas by hand and machine is used to create the appearance of natural aging.
- The majority of the finishes are designed and manufactured in-house at Chemetal in the US.
- Chemetal is a massive collection of approximately 150 designs in sheet metal. It is flexible, durable and easy to install - like a standard veneer.
- Each sheet is sealed so the finish will not age.
- Chemetal metal finishes are specified and installed in commercial interior projects all over the world.
- Chemetal is class A fire rated. IMO certified and has certifications in sustainability.

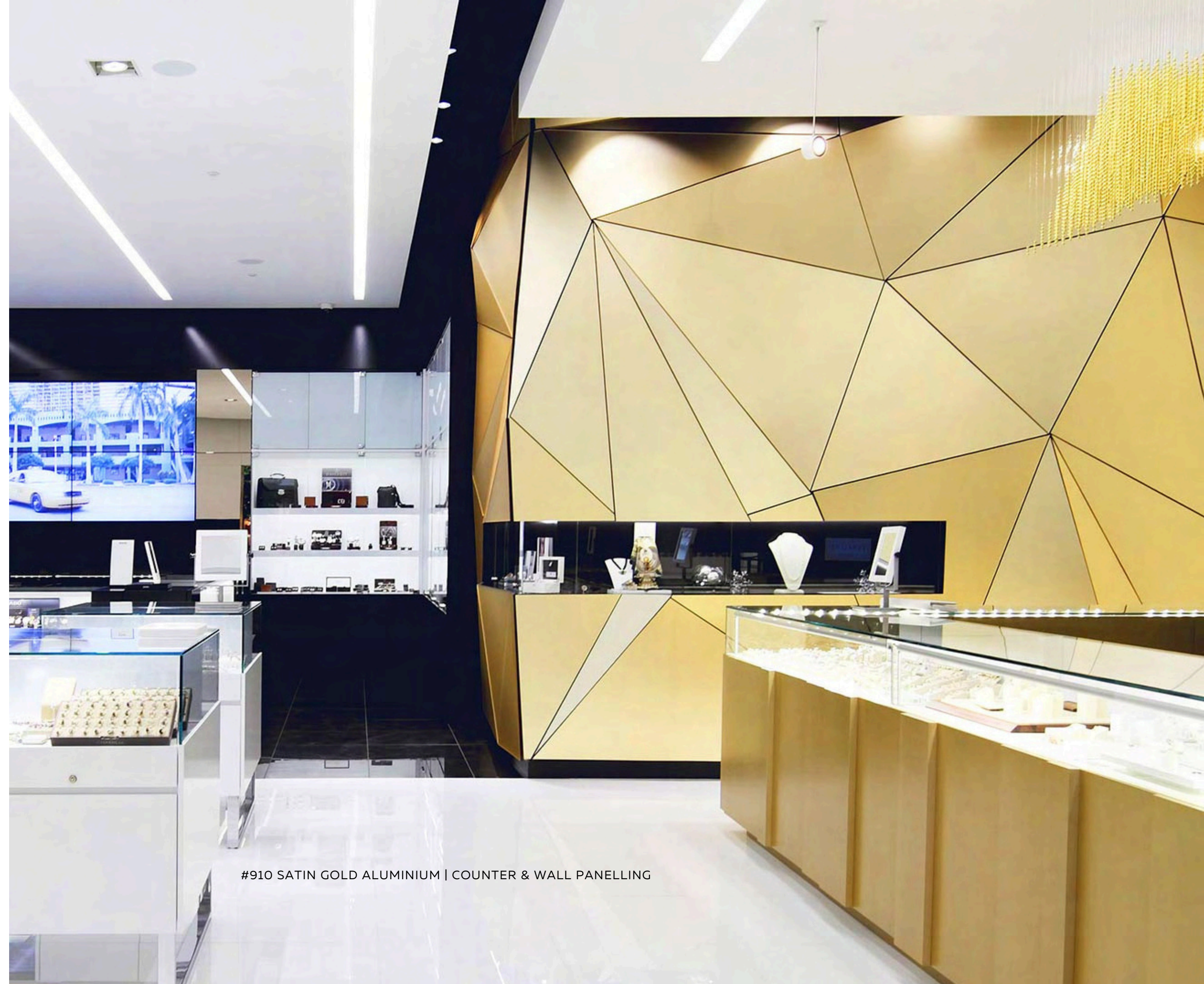


#906 BRUSHED COPPER ALUMINIUM | WALL PANNELLING & RECEPTION DESK

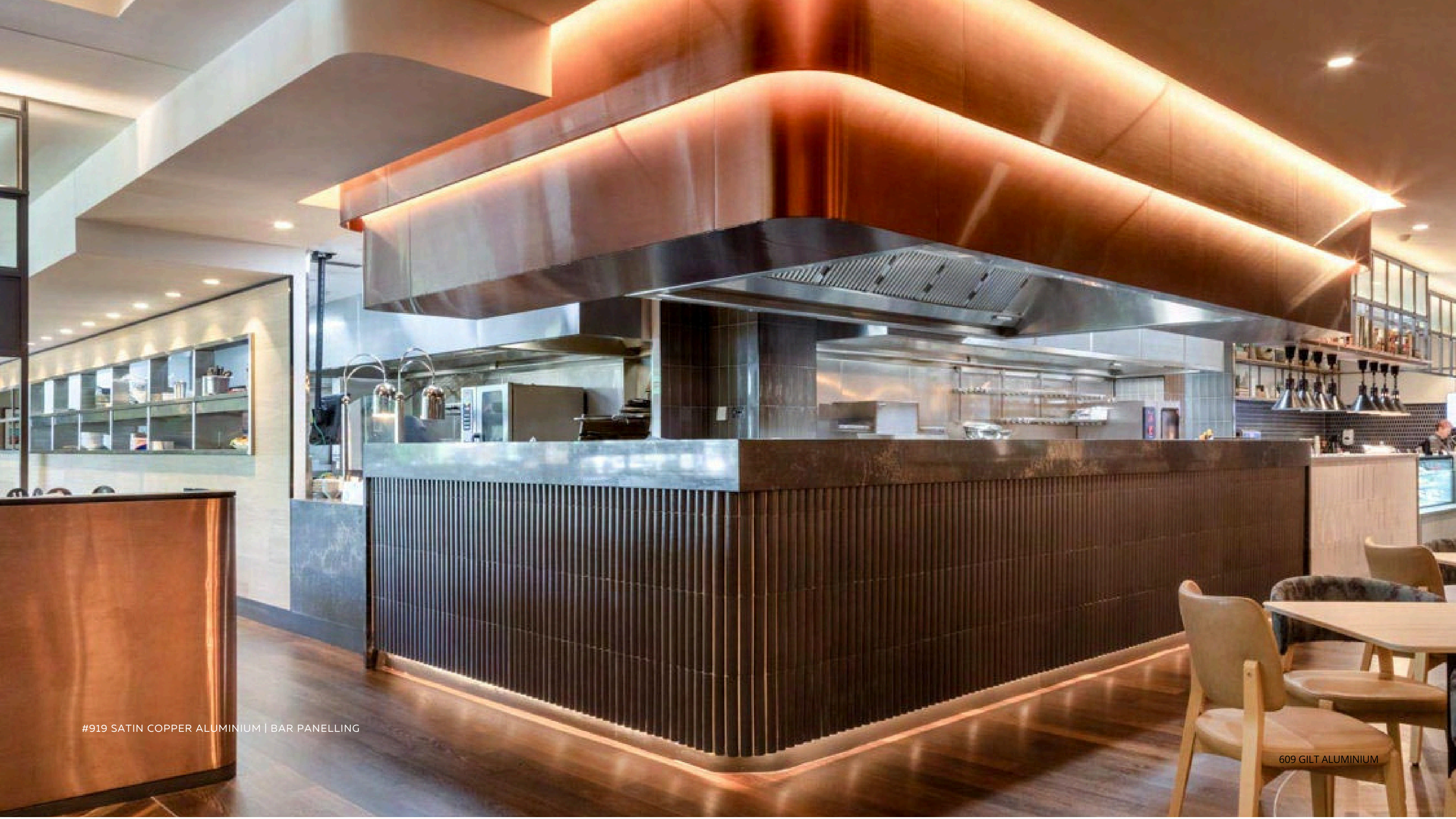
REAL METAL

Chemetal is real metal - aluminium, brass & copper

Designed to be as easy to work with as a standard veneer using woodworking tools and applications



#910 SATIN GOLD ALUMINIUM | COUNTER & WALL PANELLING



#919 SATIN COPPER ALUMINIUM | BAR PANNELLING

609 GILT ALUMINIUM



#903 POLISHED BRASS ALUMINIUM | DISPLAY COUNTER



#620 CIVILIZATION ALUMINIUM | CEILING & WALL PANELLING

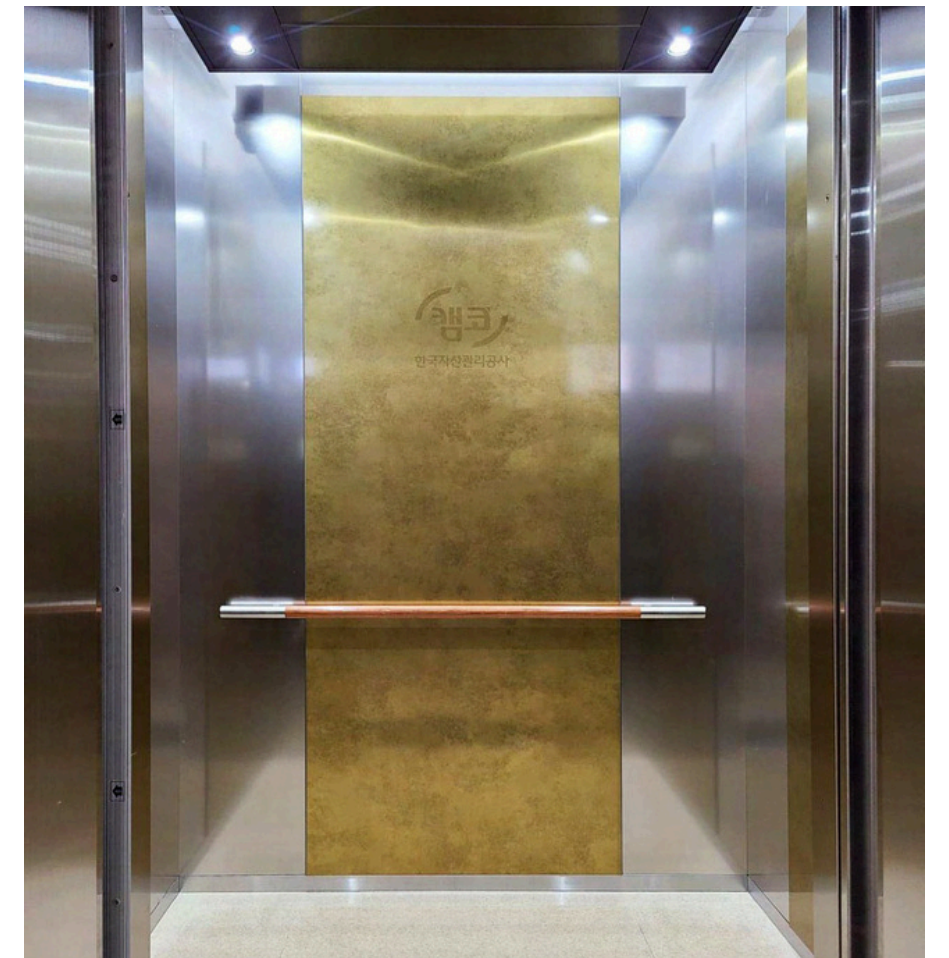


#906 BRUSHED COPPER ALUMINIUM | ELEVATOR DOORS & SURROUNDS

APPLICATIONS

Our metals are recommended for light-use horizontal and vertical applications.

Recommended cleaning is by soft-cloth. Do not use abrasive cleaners or harsh chemicals.





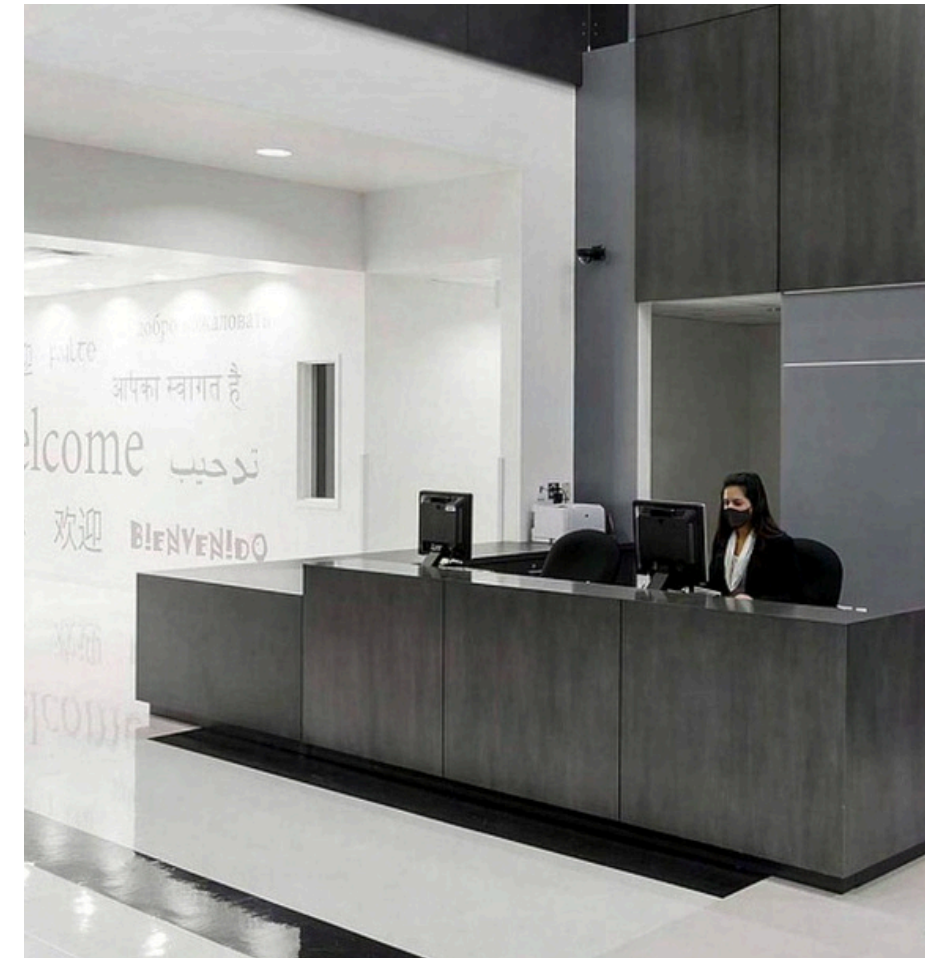
#353 ALU MEDIUM | RECEPTION DESK & WALL PANELLING

#353 ALU MEDIUM | CEILING & WALL PANELLING



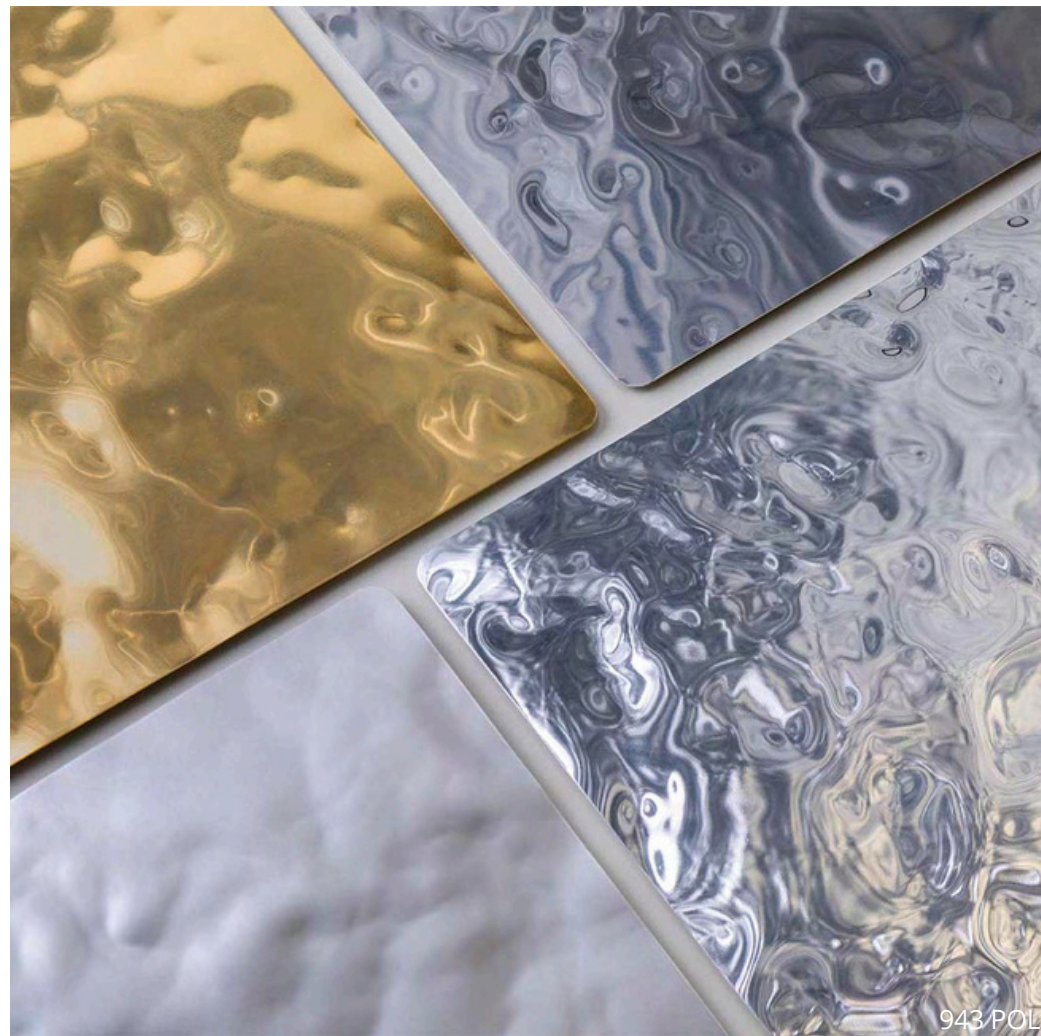
APPLICATIONS

Our decorative materials are specified and installed in commercial interior projects in hospitality, retail, corporate, signage, furniture, restaurant, stadium and residential environments.



WATERWORLD

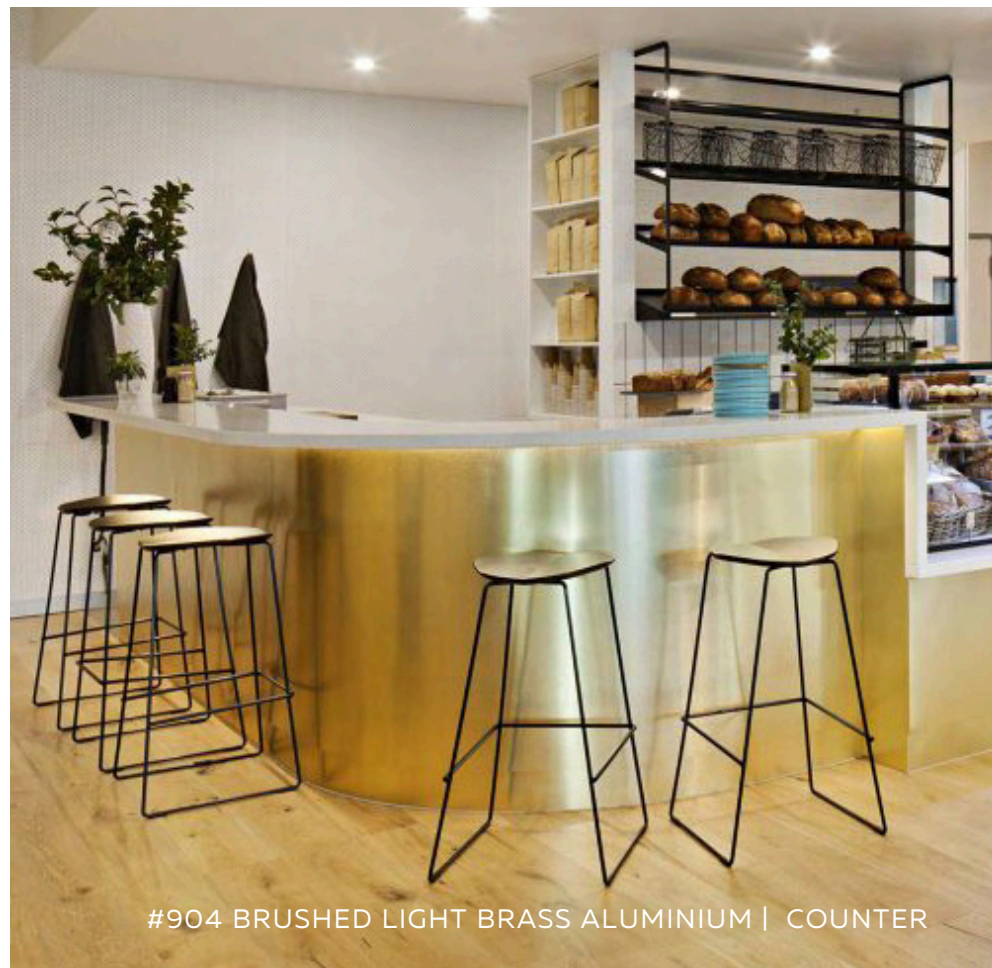
Waterworld is an energetic, water effect design that's available on any Chemetal solid aluminum design



BENDS & CURVES

The sheets can be bent down to 90 degrees in a light press brake.

They can also be curved when required.



THE RANGE

Chemetal is a great, easy and cost-effective way for design professionals to use metal in their interior design projects.

Our designs are categorised into series.

All our finishes can be cut and applied the same way using woodworking tools and laminating practices.

Each series, however, has slight variations in base metal and/or sheet size.



#325 STATUARY | SERVERY COUNTER



REAL METAL VENEERS

- Real aluminium & brass
- Handcrafted and visually deep oxidised patinas, ageing and distressing on brass.
- Elegant, bold, sublime
- One-of-a-kind patterns produced with manufacturing consistency
- Combines the durability, affordability and beauty of solid metal in brass, copper, bronze and stainless looks
- Class 1 Fire Rated, IMO Certified
- 0.4 - 0.6mm thick available in 2440 x 1220mm, 3050 x 1220mm and 610mm width sheet sizes

#900 SERIES

Our most versatile range.

Aluminium-based series combines the durability, affordability and beauty of solid metal in brass, copper, bronze and stainless looks.

Class 1 Fire Rated,
IMO Certified.

0.6mm thick available in
2440 x 1220mm and 3050 x
1220mm sheet sizes.



#910 SATIN GOLD ALUMINUM | RECEPTION DESK

#800 SERIES

Exceptionally rich finishes with luxurious visual depth as well as durability. Chrome-plated brass combines with solid brass and bronze designs.

Available as solid metal.
Class 1 Fire Rated, IMO
Certified.

0.4 mm thick available in 2440 x
610mm and 3050 x 610mm
sheet sizes.

#803

#804

#812

#814



#814 SATIN GOLDEN BRONZE | CEILING

#600 SERIES

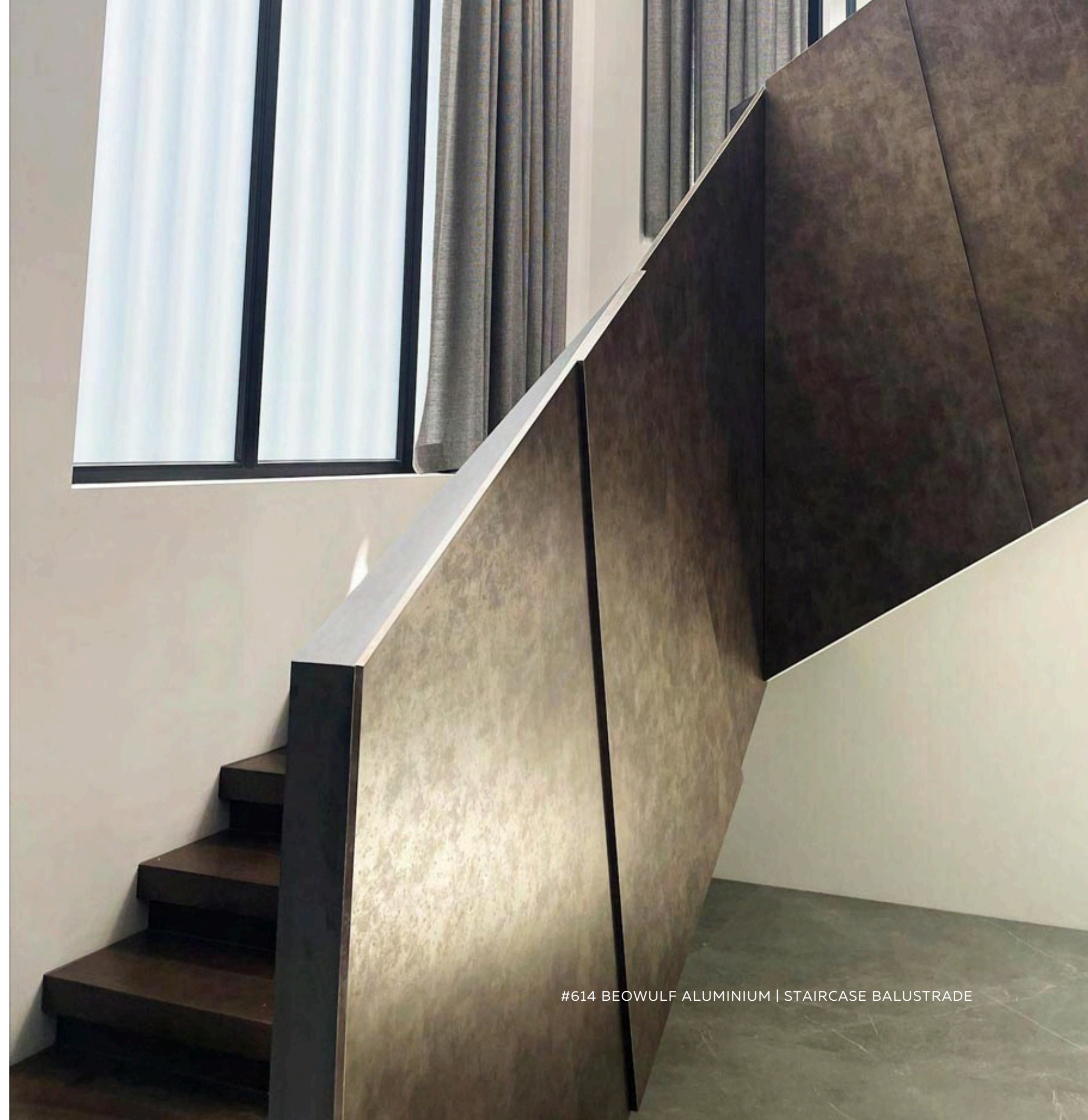
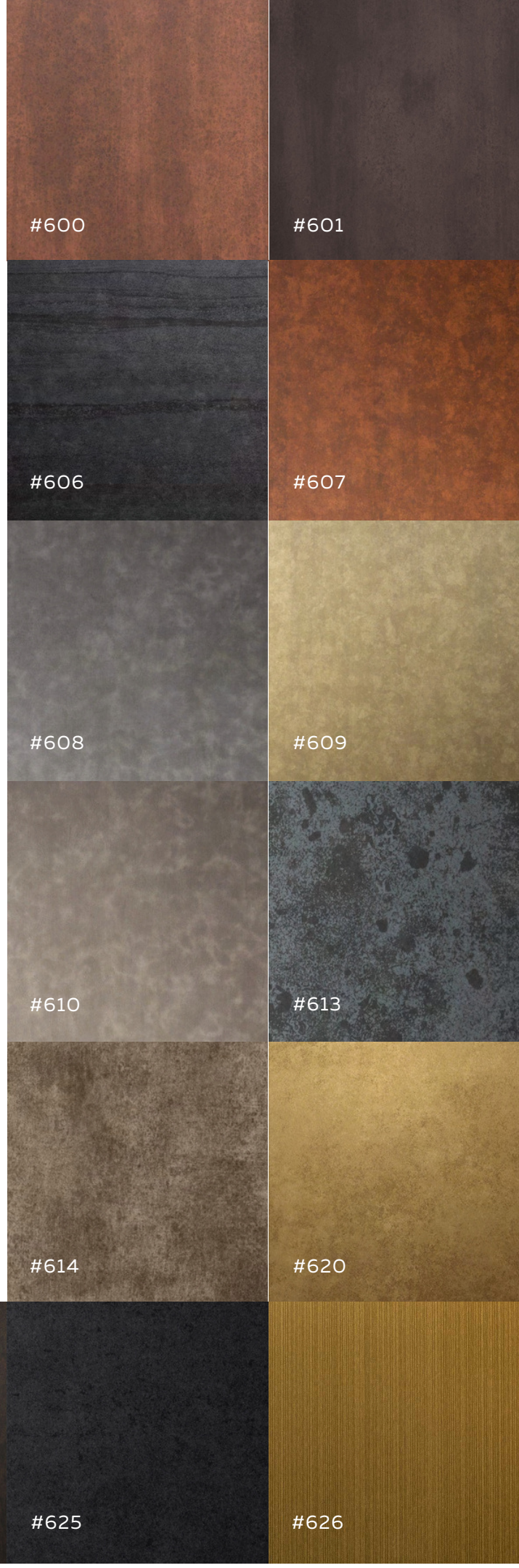
Rich, dynamic and dimensional designs printed on sheets of aluminium.

Textured and satin finishes.

Designs suited for exterior use*, Class 1 Fire Rated, IMO Certified.

0.6mm thick available in 2440 x 1220mm sheet size.

*with exception #610, #620, and #624



#614 BOWULF ALUMINIUM | STAIRCASE BALUSTRADE

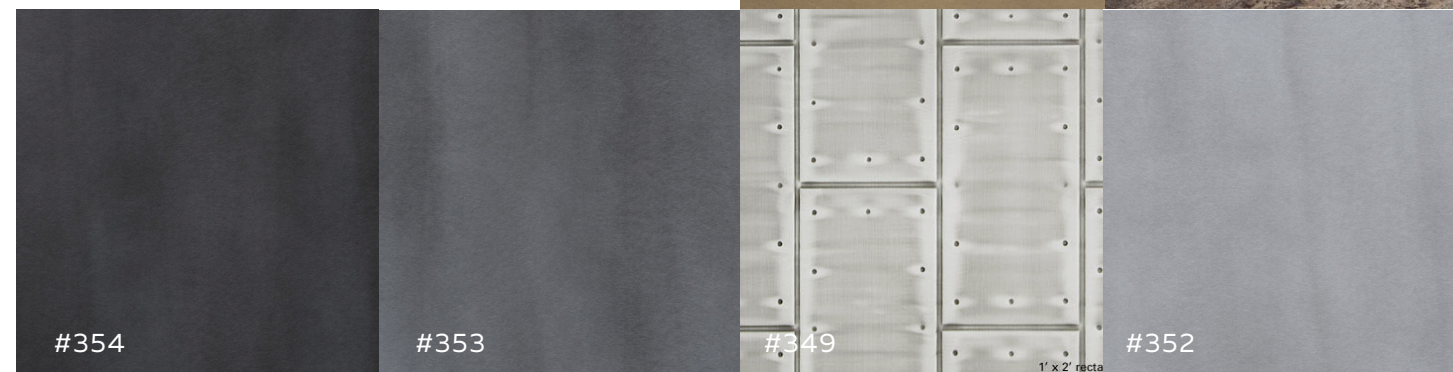
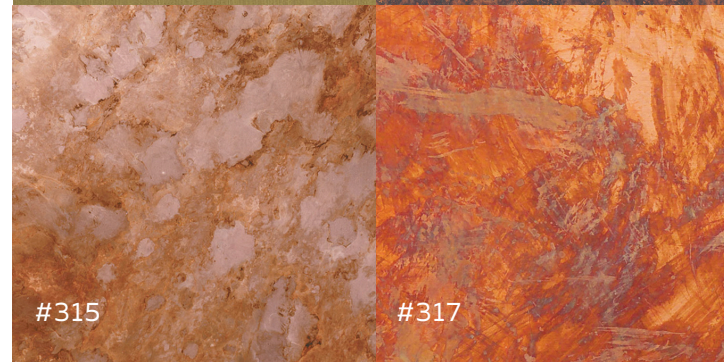
#300 SERIES

Handcrafted and visually deep oxidised patinas, ageing and distressing on brass and aluminium.

Elegant, bold, sublime.
One-of-a-kind patterns produced with manufacturing consistency.

metal Only designs Class 1 Fire Rated, IMO Certified. 0.4-1.0mm thick available in 2440 x 610mm and 3050 x 610mm with select designs available in 1220mm with sheet sizes.

This range is hand-worked and batch manufactured to a design consistency so ensure you order in good time.



#325 STATUARY | DOOR SURROUNDS



#903 POLISHED BRASS ALUMINIUM WATERWORLD | RECEPTION DESK

SUSTAINABILITY

Chemetal moved to a solar energy system in its manufacturing plant when it doubled its size in 2016.

Metal designs from Chemetal are part of the mindful materials library which allows us to share product transparency.

Our materials conform to VOC Emissions regulations and are PVC-free.

The Health Product Declaration (HPD) aims to disclose the ingredients in a product and identify any potential hazards.

The HPD's prove compliance with the most rigorous green building certifications in the world, including LEED, The Living Building Challenge and other standards which require that all materials are Red List Free.

Metals, especially aluminium, are among the most recycled materials on the planet.

Some of our metals contain up to 85% recycled content.

In addition Chemetal, is not petroleum-based, an important step towards moving away from fossil fuels.



#927 LIGHT STAINLESS STEEL ALUMINIUM | DISPLAY COUNTER KICKERS

CONTACT US

That Metal Company

Unit 5, 13 Lyell Street, Mittagong NSW 2575

T: +612 4872 2441

E: letschat@thatmetalcompany.com.au

www.thatmetalcompany.com.au