

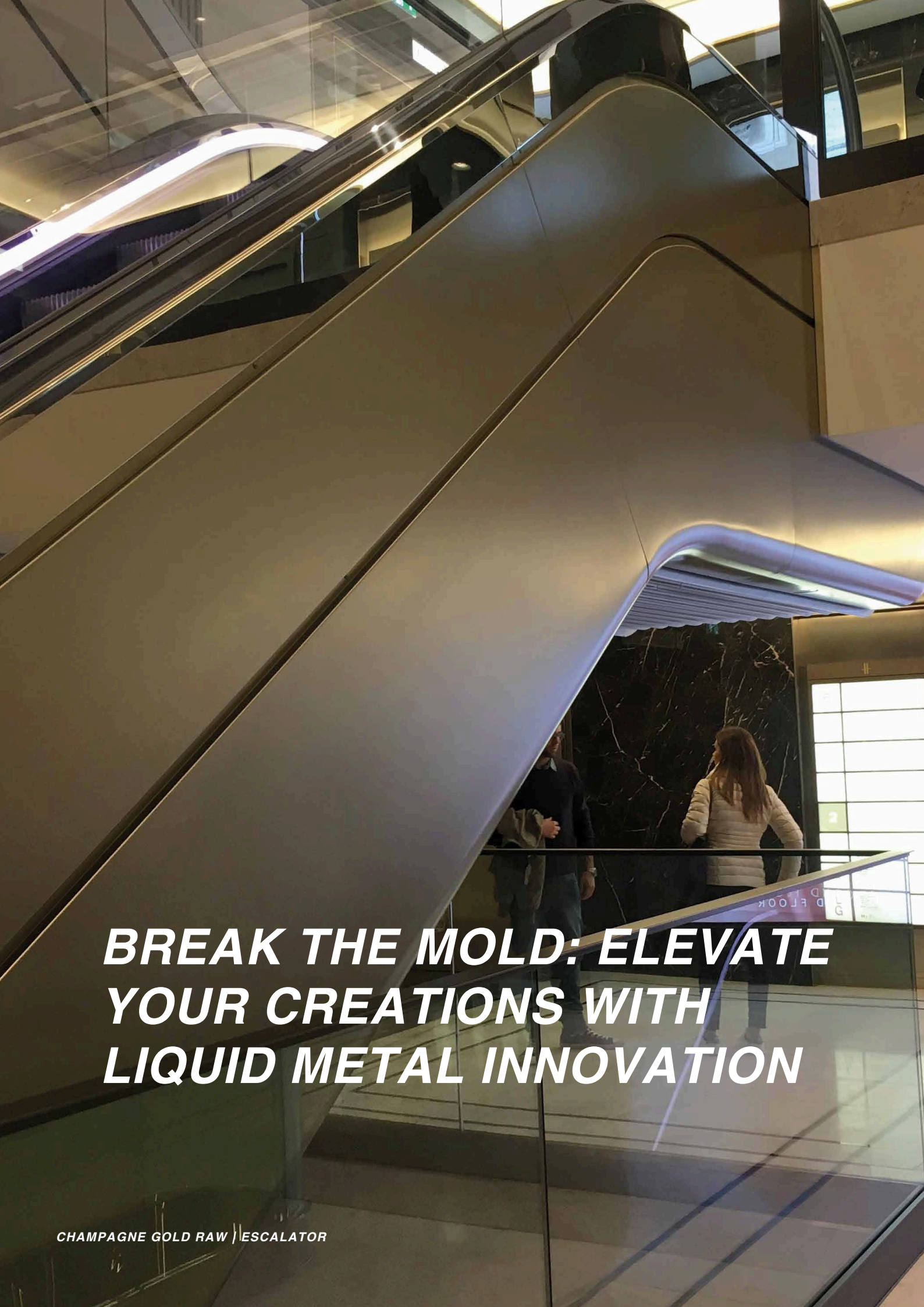
A modern interior space featuring a large wall of natural stone tiles. The wall is illuminated by a grid of recessed linear lights. A black metal table with a white sculpture sits against the wall. To the right, a large glass partition with a dark, textured finish separates the space from another area. A green velvet ottoman is in the foreground.

# MetalierInternational

***WHAT YOU NEED  
TO KNOW ABOUT  
CHOOSING METALIER***







***BREAK THE MOLD: ELEVATE  
YOUR CREATIONS WITH  
LIQUID METAL INNOVATION***

CHAMPAGNE GOLD RAW | ESCALATOR

# CONTENTS

04 - 05	<b><i>WHAT IS METALIER</i></b>
06 - 07	<b><i>THE METALIER WATER-BASED SYSTEM</i></b>
08 - 09	<b><i>THE SIGNATURE METALS</i></b>
10 - 11	<b><i>THE SIGNATURE FINISHES COLLECTION</i></b>
12 - 13	<b><i>ENVIRONMETAL BENEFITS</i></b>
14 - 15	<b><i>INSTRUCTION &amp; SUPPORT</i></b>
16 - 27	<b><i>FINISH CASE STUDIES</i></b>
28 - 29	<b><i>DISTRIBUTION</i></b>



CLASSIC GOLD WATER AGED | KITCHEN CABINETS & ISLAND



# WHAT IS METALIER

*Metalier is a versatile, water-based Liquid Metal system that allows designers, architects, and artisans to create custom metal finishes on a wide variety of surfaces. This system opens up a new world of design possibilities, enabling you to achieve everything from sleek, reflective metallic surfaces to richly textured and weathered, antique-style finishes.*

*The application process is flexible. Using an HVLP spray gun, Metalier can produce smooth metal finishes that can be sanded and buffed for a high-gloss, mirror-like effect. For those seeking a more distinctive, aged look, a patina can be applied, giving the surface a unique, bespoke character with an artisanal touch. And if spraying isn't an option, Metalier can still be applied using brushes, sponges, or paint rollers to achieve beautiful, organic textures. These textures can then be selectively sanded and buffed, creating a dynamic contrast between the matte recesses and the reflective metal lustre of the raised areas.*

*Designers are finding endless uses for Metalier across various project types, from large-scale commercial installations to bespoke residential projects. It's commonly used for interior and exterior wall cladding, ceiling panels, statement reception desks, and bar fronts, as well as window frames, entry and garage doors, kitchen cabinets, range hoods, and kitchen islands. Additionally, Metalier works well for unique architectural elements such as fireplace surrounds and custom artwork. Because of its adaptability, Metalier can be applied in a controlled workshop environment or directly on-site, giving it even greater flexibility.*

*Sustainability is also at the heart of the Metalier system. Being water-based, it contains no harmful ingredients or unpleasant odours, making it safe for both applicators and the environment. The metal powders are recycled, reducing waste and promoting eco-friendly practices. An added benefit is that these metal powders can be blended, allowing designers to create a limitless range of colours, tones, and finishes. Whether for a contemporary, buffed look or a weathered, rustic aesthetic, Metalier offers an unparalleled palette for creativity.*



# THE METALIER WATER-BASED SYSTEM

## Metalier Tie Coat - High Build Primer

*The Tie Coat is a versatile, high build primer designed to tie directly to a wide range of substrates commonly used in construction, including metal, wood, and plastic-based materials with the Water-based Metal Coat. It serves as a critical preparatory step for both commercial and residential projects, providing a smooth, uniform base that enhances the final finish.*

*When applied, the Tie Coat builds up the surface, filling in small imperfections, gaps, or inconsistencies in the substrate. This high-build capability allows the applicator to achieve a thicker, more even layer, which can then be sanded back to create a perfectly smooth and flat finish. This is especially beneficial for substrates that may have surface irregularities or textures that need to be minimised before the final metal coating is applied.*

*Additionally, the Tie Coat can be layered multiple times if necessary, offering flexibility for projects that require a particularly thick or flawless base. Each layer contributes to the durability and quality of the final surface, making it an essential step for achieving professional-grade finishes that are smooth, consistent, and free of imperfections.*

## Metalier Tie Coat Pigments

*The Tie Coat can be tinted with our range of water-based pigments, offering greater creative flexibility in achieving unique finishes. Tinting the Tie Coat allows you to harmonise or contrast with the colour tones of the Metal Coat, adding depth and customisation to the final look.*

## Metalier Water-based Metal Coat

*The Metal Coat binder is the foundation of the Metalier product range, providing the essential base that supports a wide variety of custom finishes and effects. Designed to be combined with Metal Powders, the Metal Coat binder transforms into a versatile Liquid Metal that can be applied over a prepared Tie Coat surface, creating a seamless, bonded metal layer.*

*For those seeking a smooth, polished finish, the Liquid Metal can be sprayed on with the addition of a Flow Agent, which allows it to spread evenly, reducing sanding and finishing time. This application method results in a flat, flawless metal surface*

*that can be refined to a high-gloss or satin finish, depending on the final sanding and buffing. Alternatively, for projects where texture and depth are desired, a Thickener can be added to the Liquid Metal, allowing for hand application using brushes, paint rollers, or patterned rollers. This technique enables the creation of unique textures and patterns, adding a dimensional, tactile quality to the surface.*

*Once the Liquid Metal has cured, the solidified surface is ready to be sanded and polished, revealing the true lustre of the metal beneath. At this point, the finish can either be left in its natural state, highlighting the rich tones and reflective qualities of the core metals, or it can be further customised. By applying Metalier's M5 Blue and M16 Black Patinas, the surface can be transformed with an aged, organic appearance that adds character and depth. These patinas react with the metal, creating dynamic patterns and colour variations, which can be manipulated to produce anything from subtle antique effects to bold, contrasting finishes.*

*This adaptability makes Metalier's Water-based Metal Coat an ideal choice for a range of design applications, from sleek modern surfaces to vintage-inspired textures. The system not only provides a sustainable, very low VOC option that supports worker safety and environmental responsibility but also offers unlimited creative potential for architects, designers, and artisans looking to craft standout metal finishes.*

## Metalier Flow Agent

*Incorporating the Flow Agent into the Water-based Metal Coat provides greater control over the coating's wetting characteristics, helping the applicator achieve a smooth and even sprayed surface with ease. The Flow Agent promotes*

*spread and settle more uniformly across the substrate. This reduces imperfections and minimises the formation of texture or unevenness during application.*

*By creating a more refined initial layer, the Flow Agent significantly cuts down on the sanding required to reach a flat, polished finish. Less sanding not only saves time but also preserves more of the applied metal, which can be especially valuable for intricate or delicate projects. With the Flow Agent, applicators can achieve professional-grade finishes more quickly, making it an essential additive for high-quality, efficient results.*



## Metalier Thickener

*Adding the Thickener to the Water-based Metal Coat allows you to adjust the viscosity of the Liquid Metal, enabling precise control over its thickness. With increased viscosity, textures hold their shape firmly without sagging until fully cured. This feature makes it ideal for creating striking, long-lasting textures that can be applied directly on-site to walls and ceilings, adding a distinctive touch to any space.*

## Metalier Thinner

*Once the Water-based Metal Coat binder is opened and exposed to air and warmer temperatures, the liquid within it will gradually begin to evaporate. To restore its original consistency, Metalier Thinner can be added, helping to counteract any thickening and maintain optimal performance. Metalier Patina*

*The Metalier system includes two versatile patina solutions, designed to achieve a rich array of finishes and aged effects across most Metalier metals. These patinas work on all core Metalier metals—such as Aluminium, Brass, Bronze, Copper, Iron, Nickel Silver, and Smoky Bronze—with the exception of Gunmetal, which is non-reactive to patina solutions.*

## Metalier Patina

*The Metalier system includes two versatile patina solutions, designed to achieve a rich array of finishes and aged effects across most Metalier metals. These patinas work on all core Metalier metals - such as Aluminium, Brass, Bronze, Copper, Iron, Nickel Silver, and Smoky Bronze - with the exception of Gunmetal, which is non-reactive to patina solutions.*

*M5 Blue Patina: This option creates dynamic, time-worn finishes, bringing out vibrant, earthy tones that can mimic natural aging. Popular effects include Iron Rust, a deep, weathered look that adds character to any surface, and Copper Verdigris, a blue-green patina that gives a classic, rustic touch to copper surfaces. These effects provide authentic, historical charm, perfect for projects that require an antique or aged aesthetic.*

*M16 Black Patina: This patina offers a spectrum of aged looks from subtle to striking. For example, it can produce Iron Light Aged, which gently weathers the surface to give a soft, vintage look, or Brass Windsor, which provides an elegant, muted finish.*

*For a more intense transformation, M16 Black Patina can create effects like Aluminium Blue Oiled, which gives a sleek, darkened appearance, or Bronze Dark Moody, a dramatic, deep finish that exudes sophistication.*

*Both patinas are customisable for even greater control over the final appearance. Diluting the solutions with demineralised water slows the chemical reaction, allowing for a more subtle, gradual aging effect. This flexibility to build up layers and achieve highly customised, nuanced finishes, whether it's a gentle patina or a bold, aged transformation.*

*These patinas provide designers and applicators with a powerful toolset for creating unique, historical-inspired finishes that enhance the depth and character of any Metalier surface.*

## Metalier Clear Coat

*After the finishes are meticulously crafted and thoroughly cleaned, they can be sealed with a durable clear coat to maintain their beauty and halt the aging process, ensuring a lasting, protected surface. This clear coat provides reliable protection for both interior and exterior applications, shielding the finish from environmental factors like moisture, UV rays, and wear over time. This is especially valuable for high-traffic areas or surfaces exposed to the elements, as it helps retain the original look and enhances the longevity of the Metalier finish.*

*For added customisation, the Metalier Matting Agent can be blended into the clear coat to control its gloss level, giving designers and applicators the flexibility to achieve the exact sheen that suits their vision. Options range from a soft, matt finish that lends a subtle, natural look to the metal; to satin and semi-gloss, which offer a balanced sheen with moderate reflectivity; to a high-gloss finish that maximises shine, giving the surface a polished, reflective quality.*

*This range of gloss levels allows for tailored finishes to complement any design, whether you're aiming for a contemporary, sleek look or a vintage, understated charm. With Metalier's flexible sealing system, you not only enhance the durability and lifespan of the finish but also have the creative control to refine its aesthetic impact, making each piece a unique, enduring statement.*

## THE SIGNATURE METALS

*We get it—nearly every company in our industry claims eco-friendly materials and recycled metals. At Metalier, however, we go beyond the standard. By combining recycled metal powders with our water-based system, we create a unique double benefit for the environment. Plus, our metals are coated with a proprietary layer that prevents oxidation, maintaining their lustre and quality over time. Each pack of metal is also vacuum-sealed for added protection, ensuring pristine condition until it's ready for application. So, while our goals may align with others, our commitment to sustainability reaches deeper.*

*Our range includes 8 core metals - Aluminium, Brass, Bronze, Copper, Gunmetal, Iron, Nickel Silver, and Smoky Bronze - each offering a unique colour and tone to suit a variety of design aesthetics. These core metals can be blended seamlessly, creating a virtually limitless palette for customisation. To further support creative possibilities, we have developed our Signature Metals range, which features four popular blends: Classic Gold, Champagne Gold, Gunmetal Silver, and Rose Gold. These blended options allow designers to achieve distinctive, high-end finishes, providing flexibility in crafting both subtle and bold looks.*

***THINK METALIER,  
THINK SUSTAINABLE  
LUXURY***





ALUMINIUM



BRASS



BRONZE



COPPER



GUNMETAL



IRON



NICKEL SILVER



CLASSIC GOLD\*



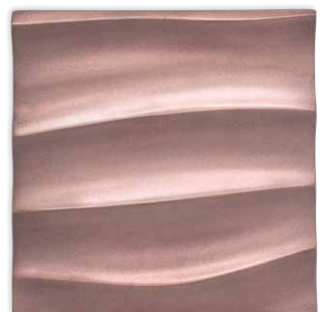
CHAMPAGNE GOLD\*



SMOKY BRONZE



GUNMETAL SILVER\*

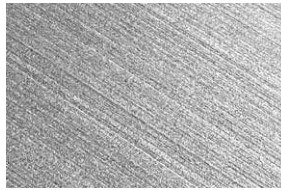


ROSE GOLD\*

*\* Mixed metal combinations created by blending core metal powders together.*



**01\_AL\_BO**  
**ALUMINIUM BLUE OILED**



**02\_AL\_BR**  
**ALUMINIUM BRUSHED**



**03\_BR\_WN**  
**BRASS WINDSOR**



**04\_BR\_NB**  
**BRASS NEBULA**



**05\_BZ\_DM**  
**BRONZE DARK MOODY**



**06\_BZ\_LD**  
**BRONZE LINEAR DARK**



**07\_CO\_VD**  
**COPPER VERDIGRIS**



**08\_CO\_WA**  
**COPPER WATER AGED**



**09\_GM\_LT**  
**GUNMETAL LIGHT TEXTURE**



**10\_IR\_LA**  
**IRON LIGHT AGED**



**11\_IR\_RT**  
**IRON RUST**



**12\_NS\_RW**  
**NICKEL SILVER RAW**



**13\_NS\_WO**  
**NICKEL SILVER WOVEN**



**14\_CG\_SM**  
**CLASSIC GOLD SMOOTH**



**15\_CM\_RW**  
**CHAMPAGNE GOLD RAW**



**16\_SB\_LN**  
**SMOKY BRONZE LINEAR**



**17\_GS\_SM**  
**GUNMETAL SILVER SMOOTH**



**18\_RG\_SM**  
**ROSE GOLD SMOOTH**

*Patinas can be applied to the metal coatings to achieve various effects. There will be different reactions between the patina and the metal with each item aged, as well as variations within the same panel. This is an intended inconsistency that replicates the natural aging of metals. Environmental conditions such as temperature and humidity will all affect the outcome of the desired patina and lead to variations in colour and shade. It is important to note that any metal samples received, whether aged or not, are only an indication of the possible finish that will be visible, within areas of the finished item. This product is handcrafted, colour and finish will vary.*



# THE SIGNATURE FINISHES COLLECTION

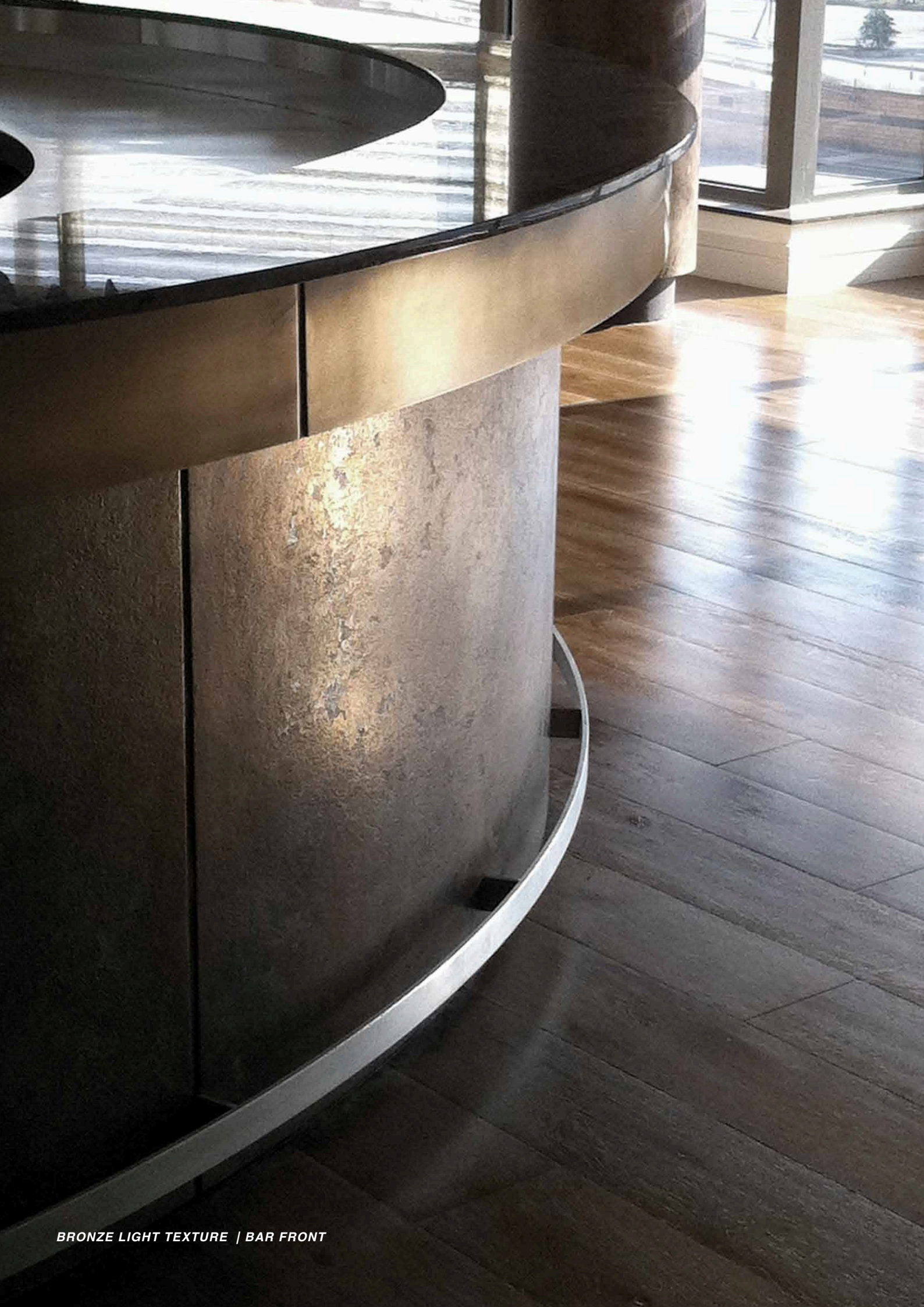
*We are proud to introduce the Metalier Signature Finishes Collection, a refined selection of 18 distinct finishes that showcase our most sought-after metal colours and tones, all achievable with the Metalier Water-based System. This collection has been carefully developed to offer architects and designers a versatile palette of metal finishes, from classic to contemporary, that can be seamlessly integrated into various architectural and design projects. Each finish in the collection has been crafted to highlight the unique qualities of Metalier's water-based system, which combines aesthetic beauty with environmental responsibility.*

*To make specifying these finishes as straightforward as possible, Metalier actively promotes the Signature Finishes Collection across digital marketing channels,*

*resource materials, and sample libraries, providing architects and designers with an accessible, visually rich guide. This ensures that Metalier's options are easy to explore, compare, and incorporate into both residential and commercial projects.*

*Supporting this collection, the Metalier Training Program is structured around teaching each of the 18 finishes in the Signature Finishes Collection. Through this training, participants gain hands-on experience with the Metalier Water-based System, learning the techniques required to reproduce these finishes accurately and create professional-grade samples. This program not only enhances the skill level of applicators but also ensures that designers and architects can rely on a consistent, high-quality finish for every specification.*

***READY FOR THE NEXT BIG  
THING? METALIER LIQUID  
METAL IS CHANGING  
EVERYTHING***



BRONZE LIGHT TEXTURE | BAR FRONT



# ENVIRONMENTAL BENEFITS

***Metalier Water-based Metal Coat combines exceptional durability with eco-conscious innovation, prioritising sustainability and user safety at every stage. With very low volatile organic compounds (VOCs), this system minimises air pollution, toxic fumes and harmful chemicals. This not only protects the environment but also promotes healthier indoor air quality, creating a safer, more comfortable workplace for applicators and occupants alike.***

***Our water-based system aligns with stringent environmental regulations on VOC emissions and hazardous materials, helping businesses comply with these standards while reducing their environmental impact. The Metalier Water-based Metal Coat ensures consistent, high-quality results that meet the highest standards of sustainability, workplace safety, and regulatory compliance, allowing businesses to achieve stunning metal finishes without compromising health or environmental integrity.***

## Water-Based, Solvent-Free Technology

***Our innovative water-based binders replace traditional solvents, delivering strength and versatility without harsh chemicals, making Metalier an ideal choice for eco-conscious projects. Each binder is developed with decades of expertise to ensure long-lasting, safe, and environmentally friendly coatings.***

## Recycled Metals and Lasting Quality

***We combine responsibly sourced, recycled metals with our water-based system, amplifying the sustainability benefits. Each metal particle is coated with a protective layer to prevent oxidation, ensuring long-lasting lustre and quality. Vacuum-sealed packaging preserves purity until application, reducing resource consumption and supporting environmental responsibility.***

## Energy-Efficient Cold Process Technology

***Our cold application method eliminates the high-heat demands of traditional metalworking, significantly reducing emissions and energy use. This process delivers authentic, rich metal finishes without environmental compromise, meeting the needs of architects and designers focused on sustainable solutions.***

## Reducing Carbon Footprint Through Localised Production

***Headquartered in New Zealand, Metalier actively collaborates with global partners to develop local water-based systems, reducing transit miles and ensuring that beautiful, sustainable metal finishes are accessible worldwide.***

***With Metalier, you're choosing a system that balances high performance with a profound commitment to sustainability and safety, allowing you to create beautiful, durable metal finishes that are as responsible as they are remarkable.***





***WANT TO STAND OUT?  
TRANSFORM SURFACES  
WITH METALIER  
LIQUID METAL***

# INSTRUCTION & SUPPORT

***Metalier offers a comprehensive set of instructional videos covering all techniques needed to create each of the 18 finishes in the Signature Finishes Collection. These videos also provide guidance on mixing the binder and metals for spraying, the spraying technique itself, and surface finishing. Through these resources, you'll learn to accurately replicate each finish and produce high-quality, professional samples.***

***You'll also have access to an extensive suite of support materials designed to enhance training and facilitate project applications, including:***

Training Manual ***with detailed mixing ratio tables for precise preparation and consistency across applications.***

Finish Instruction and Specification Sheets ***offering step-by-step guidance for accurate, repeatable results.***

Instructions for Creating Sample Boxes and Sample Label Templates ***for a professional presentation.***

Digital and Printed Brochure Templates ***to effectively showcase finishes.***

Project Photos from Around the World ***for inspiration and portfolio support.***

***Additionally, technical support is always available through local distributors and Metalier's global network.***

***These resources, along with Metalier's instructional videos, not only help build technical skills but also equip you with marketing and technical materials to confidently specify and promote Metalier finishes, reach new customers, and grow your business.***





# CLASSIC GOLD SMOOTH



FINISH	<i>Classic Gold Smooth</i>
CODE	<i>14_CG_SM</i>
COLLECTION	<i>Metalier Signature Finishes</i>
COMPOSITION	<i>Brass &amp; Copper</i>
THICKNESS	<i>Approx. 200 micron / 0.2mm</i>
TEXTURE	<i>Smooth</i>
CLEARCOAT	<i>Semi Gloss</i>

## DESCRIPTION

Explore the Metalier Signature Finishes Collection – a remarkable range of hand-finished coatings for a unique, bespoke look in design. Crafted with distinctive lustre, the Classic Gold Smooth ensures a one-of-a-kind finish. Protected by a clear coat lacquer, to maintain their allure for years to come. With bespoke finishes and an artisanal touch, Metalier Signature Finishes Collection is the ideal choice for those seeking a touch of luxury and sophistication in their design projects, creating timeless and captivating spaces that endure.

It's important to understand that any metal samples provided, whether aged or not, serve only as an indication of the potential finish and will represent portions of the final product.



## APPLICATION TABLE

This table presents the alternative metal options suitable for this finish and where it can be applied.

METALS	INTERIOR	EXTERIOR	ONSITE	CURVES
ALUMINIUM	•	•	•	•
BRASS	•	•	•	•
BRONZE COPPER	•	•	•	•
GUNMETAL IRON	•	•	•	•
NICKEL SILVER	•	•	•	•
CLASSIC GOLD	•	•	•	•
CHAMPAGNE GOLD	•	•	•	•
SMOKY BRONZE	•	•	•	•
GUNMETAL SILVER	•	•	•	•
ROSE GOLD	•	•	•	•
	•	•	•	•
	•	•	•	•

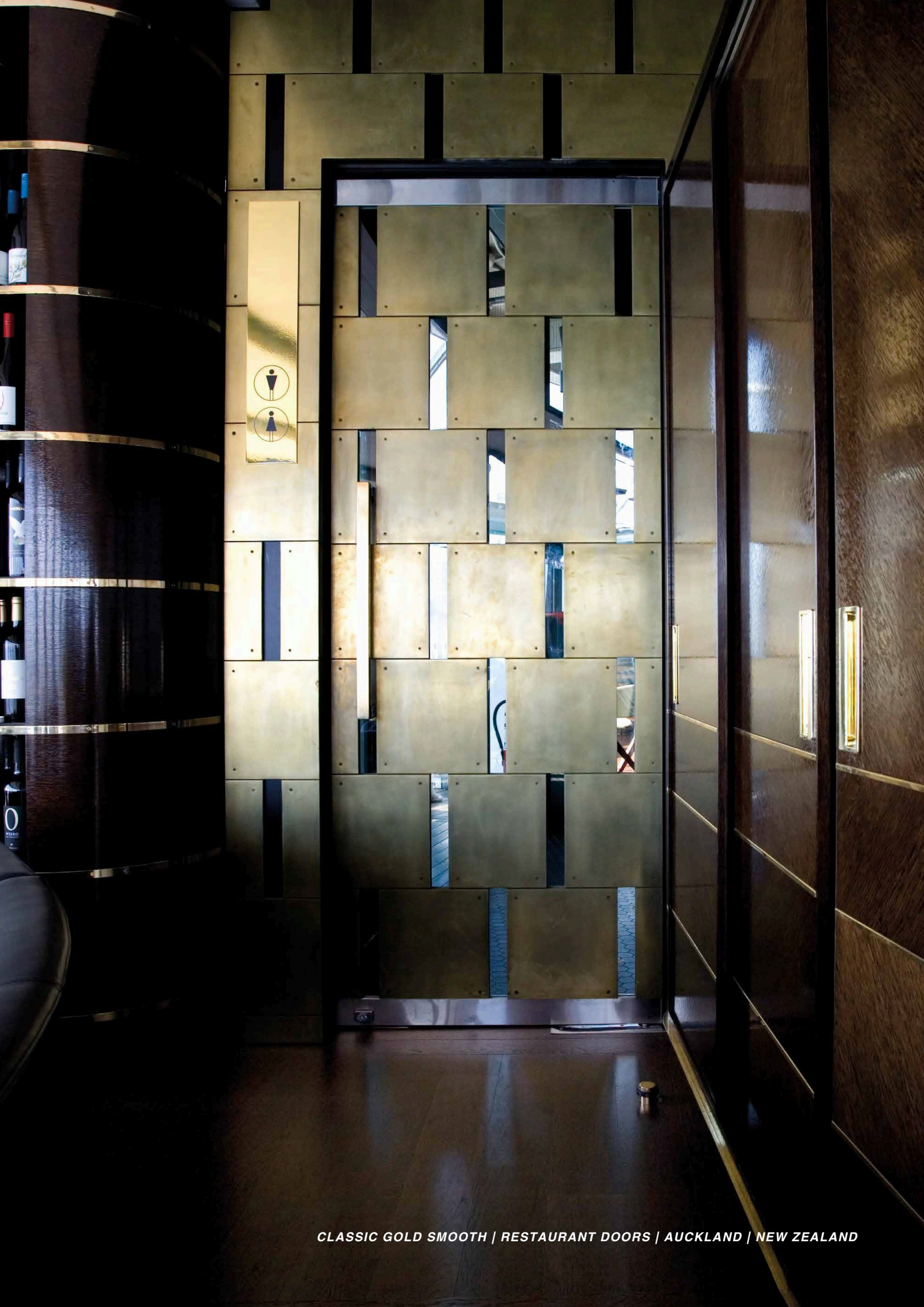
Interior - can be applied on interior projects with the appropriate clear coat.

Exterior - can be applied on exterior projects with the appropriate clear coat.

Onsite - can be applied onsite using our Metalier Water-based Metal Coat.

Curves - is suitable for application on round or curved surfaces.

More information and samples are available on request.



CLASSIC GOLD SMOOTH | RESTAURANT DOORS | AUCKLAND | NEW ZEALAND







# IRON RUST



FINISH	Iron Rust
CODE	11_IR_RT
COLLECTION	Metalier Signature Finishes
COMPOSITION	Iron
THICKNESS	Approx. 200 micron / 0.2mm
TEXTURE	Smooth
CLEARCOAT	Matt

## DESCRIPTION

Explore the Metalier Signature Finishes Collection – a remarkable range of hand-finished coatings for a unique, bespoke look in design. Crafted with distinctive patination, the Iron Rust ensures a one-of-a-kind finish. Protected by a clear coat lacquer, to maintain their allure for years to come. With bespoke finishes and an artisanal touch, Metalier Signature Finishes Collection is the ideal choice for those seeking a touch of luxury and sophistication in their design projects, creating timeless and captivating spaces that endure.

Patinas can be applied to metal coatings to create a variety of effects, with each piece aging uniquely and showing different reactions between the patina and metal. Even within the same panel, variations will occur, reflecting the natural aging process of metals. Factors like temperature, humidity, and other environmental conditions also influence the final outcome, leading to differences in colour and shade.

It's important to understand that any metal samples provided, whether aged or not, serve only as an indication of the potential finish and will represent portions of the final product.

## APPLICATION TABLE

This table presents the alternative metal options suitable for this finish and where it can be applied.

METALS	INTERIOR	EXTERIOR	ONSITE	CURVES
ALUMINIUM				
BRASS				
BRONZE COPPER				
GUNMETAL IRON				
NICKEL SILVER				
CLASSIC GOLD				
CHAMPAGNE GOLD				
SMOKY BRONZE				
GUNMETAL SILVER				
ROSE GOLD				

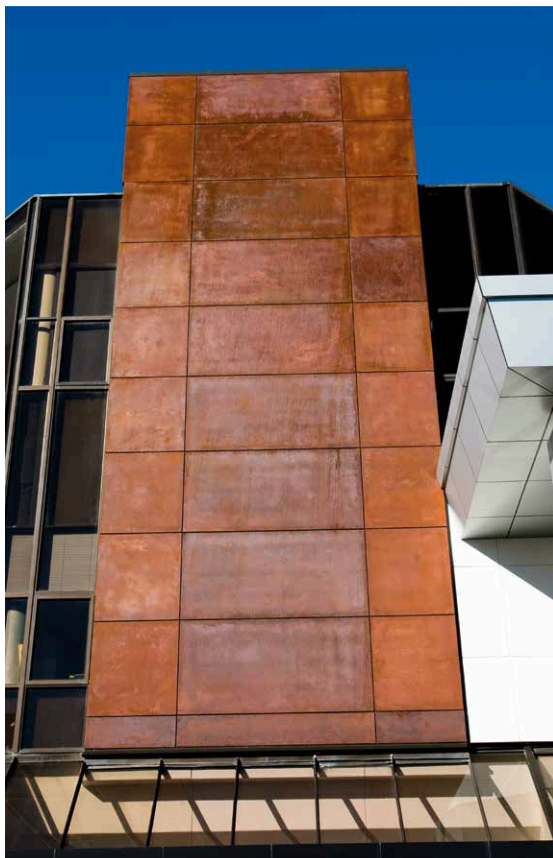
Interior - can be applied on interior projects with the appropriate clear coat.

Exterior - can be applied on exterior projects with the appropriate clear coat.

Onsite - can be applied onsite using our Metalier Water-based Metal Coat.

Curves - is suitable for application on round or curved surfaces.

More information and samples are available on request.







**BRASS WINDSOR | ENTRANCE & GARAGE DOOR**









ALUMINIUM BLUE OILED | ENTRANCE DOORS

# ALUMINIUM BLUE OILED



FINISH	Aluminium Blue Oiled
CODE	01_AL_BO
COLLECTION	Metalier Signature Finishes
COMPOSITION	Aluminium
THICKNESS	Approx. 200 micron / 0.2mm
TEXTURE	Smooth
CLEARCOAT	Matt

## DESCRIPTION

Explore the Metalier Signature Finishes Collection – a remarkable range of hand-finished coatings for a unique, bespoke look in design. Crafted with distinctive patination, the Aluminium Blue Oiled ensures a one-of-a-kind finish. Protected by a clear coat lacquer, to maintain their allure for years to come. With bespoke finishes and an artisanal touch, Metalier Signature Finishes Collection is the ideal choice for those seeking a touch of luxury and sophistication in their design projects, creating timeless and captivating spaces that endure.

Patinas can be applied to metal coatings to create a variety of effects, with each piece aging uniquely and showing different reactions between the patina and metal. Even within the same panel, variations will occur, reflecting the natural aging process of metals. Factors like temperature, humidity, and other environmental conditions also influence the final outcome, leading to differences in colour and shade.

It's important to understand that any metal samples provided, whether aged or not, serve only as an indication of the potential finish and will represent portions of the final product.

## APPLICATION TABLE

This table presents the alternative metal options suitable for this finish and where it can be applied.

METALS	INTERIOR	EXTERIOR	ONSITE	CURVES
ALUMINIUM	•	•		
BRASS				
BRONZE COPPER				
GUNMETAL IRON				
NICKEL SILVER				
CLASSIC GOLD				
CHAMPAGNE GOLD				
SMOKY BRONZE				
GUNMETAL SILVER				
ROSE GOLD				

Interior - can be applied on interior projects with the appropriate clear coat.

Exterior - can be applied on exterior projects with the appropriate clear coat.

Onsite - can be applied onsite using our Metalier Water-based Metal Coat.

Curves - is suitable for application on round or curved surfaces.

More information and samples are available on request.





# BRONZE DARK MOODY



FINISH	Bronze Dark Moody
CODE	05_BZ_DM
COLLECTION	Metalier Signature Finishes
COMPOSITION	Bronze
THICKNESS	Approx. 200 micron / 0.2mm
TEXTURE	Smooth
CLEARCOAT	Matt

## DESCRIPTION

Explore the Metalier Signature Finishes Collection – a remarkable range of hand-finished coatings for a unique, bespoke look in design. Crafted with distinctive patination, the Bronze Dark Moody ensures a one-of-a-kind finish. Protected by a clear coat lacquer, to maintain their allure for years to come. With bespoke finishes and an artisanal touch, Metalier Signature Finishes Collection is the ideal choice for those seeking a touch of luxury and sophistication in their design projects, creating timeless and captivating spaces that endure.

Patinas can be applied to metal coatings to create a variety of effects, with each piece aging uniquely and showing different reactions between the patina and metal. Even within the same panel, variations will occur, reflecting the natural aging process of metals. Factors like temperature, humidity, and other environmental conditions also influence the final outcome, leading to differences in colour and shade.

It's important to understand that any metal samples provided, whether aged or not, serve only as an indication of the potential finish and will represent portions of the final product.

## APPLICATION TABLE

This table presents the alternative metal options suitable for this finish and where it can be applied.

METALS	INTERIOR	EXTERIOR	ONSITE	CURVES
ALUMINIUM	•	•		
BRASS	•	•		
BRONZE COPPER	•	•		
GUNMETAL IRON	•	•		
NICKEL SILVER				
CLASSIC GOLD	•	•		
CHAMPAGNE GOLD	•	•		
SMOKY BRONZE	•	•		
GUNMETAL SILVER	•	•		
ROSE GOLD	•	•		
	•	•		
	•	•		

Interior - can be applied on interior projects with the appropriate clear coat.

Exterior - can be applied on exterior projects with the appropriate clear coat.

Onsite - can be applied onsite using our Metalier Water-based Metal Coat.

Curves - is suitable for application on round or curved surfaces.

More information and samples are available on request.







BRONZE DARK MOODY | KITCHEN CABINETS & ISLAND









The image shows a dark, almost black, surface with a complex, organic texture that resembles marbled paper or a heavily grained material. Two vertical, polished silver handles are positioned symmetrically on either side of a central vertical crease. Below the left handle, there is a small, circular silver lock mechanism with a keyhole. The lighting is soft, highlighting the metallic sheen of the handles and the intricate details of the background texture.

***DISCOVER THE FUTURE OF  
DESIGN WITH METALIER***



# DISTRIBUTION

*As the exclusive distributor, we offer everything you need to integrate the Metalier Water-based System into your manufacturing or design processes.*

*For enquiries, please contact us below:*

That Metal Company  
**5/13 Lyell Street**  
**Mittagong NSW 2575**

**T: +61 2 4872 2441**

**E: [letschat@thatmetalcompany.com.au](mailto:letschat@thatmetalcompany.com.au)**

**W: [thatmetalcompany.com.au](http://thatmetalcompany.com.au)**





# THE STUDIO

INTERIOR DESIGN & INNOVATION

Harrods